

CORDEX

News

ESGF data loss impacting the availability of CORDEX-CMIP5 data

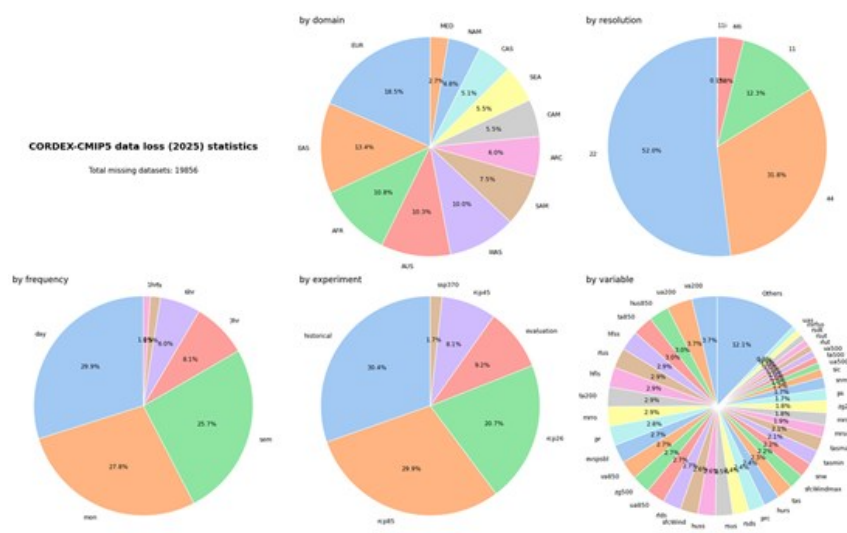
In early 2025, a major data loss at DKRZ significantly impacted the availability of CORDEX-CMIP5 data through the ESGF, as many datasets—without existing replicas—were stored exclusively at that node. Despite the hard work to recover as many data sets as possible, the loss still affects approximately 20,000 datasets (over 200 TB), spanning multiple CORDEX domains, variables, and output frequencies. A full list of the missing datasets can be found [here](#).

All CORDEX users are encouraged to check their local CORDEX-CMIP5 data archives (downloaded from ESGF) to help mitigate the impact of this data loss. A simple script is available in the [esgf-data-loss/](#) directory to assist in identifying whether your system contains any of the missing data.

```
bash locate_available_data.sh  
/path/to/your/CORDEX/data/following/ESGF/directory/structure
```

If you discover that you hold any of the affected datasets, please open an issue in [this repository](#) or contact: datasupport@cordex.org.

Some of the most commonly used variables from the CORDEX-CMIP5 archive remain accessible via the [Copernicus Climate Data Store](#) (Diez-Sierra et al. 2024).



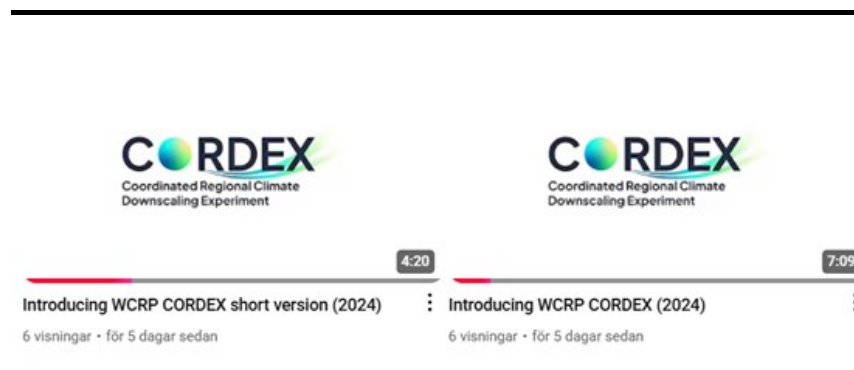
Survey on potential commitments for CORDEX-CMIP7 in time for AR7

The CORDEX [Task Force on Preparation of CMIP7](#) has prepared a survey on potential commitments for CORDEX-CMIP7 in time for AR7 to collect information about plans from modelling groups.

The CORDEX Task Force (TF) on Preparation of CORDEX-CMIP7 is preparing the way to downscale the upcoming CMIP cycle, starting with the CMIP7 Fast Track, which will respond to the needs of the IPCC 7th Assessment Report (AR7). In this respect, the TF would benefit from prior knowledge of existing national or institutional commitments to downscale the CMIP7 Fast Track in time for AR7 or other assessments/adaptation plans in the short term. This brief survey collects key information to assist the TF work.

Please find [the survey here](#).

The **deadline** for answering is extended until **end of May**.



New video: Introducing CORDEX

An introduction video about CORDEX has been produced in 2024. This video is available on our [Youtube channel](#) and on the CORDEX website in a [long version](#). On Youtube there is also a [short version](#) available. The video introduces CORDEX and makes the viewer discover how CORDEX improves regional climate projections, helping communities better adapt to climate change and make informed decisions for a more resilient future. It is a quick overview of how this essential initiative benefits society and contributes to tackling climate challenges.

Post doc position in regional climate science

Would you like to contribute to developing tomorrow's knowledge about the climate and create qualified decision support for society and industry? To meet society's expectations for information about future climate, Rossby Centre, at SMHI in Sweden, is now expanding its activities. We offer a stimulating environment with extensive external collaboration and flexible working methods.

This is a two-year fixed-term position as a Postdoctoral Fellow, with the possibility of a one-year extension.

[Read more here](#).



If you have colleagues who are interested in subscribing to our newsletters, please tell them to register through the link below:

[Do you want to subscribe to the CORDEX newsletter?](#)

You are receiving this email because you have subscribed to the CORDEX newsletter.
If you do not wish to receive further communication like this, [unsubscribe here](#).

**The International Project Office for CORDEX is hosted by
Swedish Meteorological and Hydrological Institute (SMHI),
Folkborgsvägen 17, 601 76 Norrköping, Sweden**

[CORDEX WEBSITE](#)

[E-MAIL](#)

